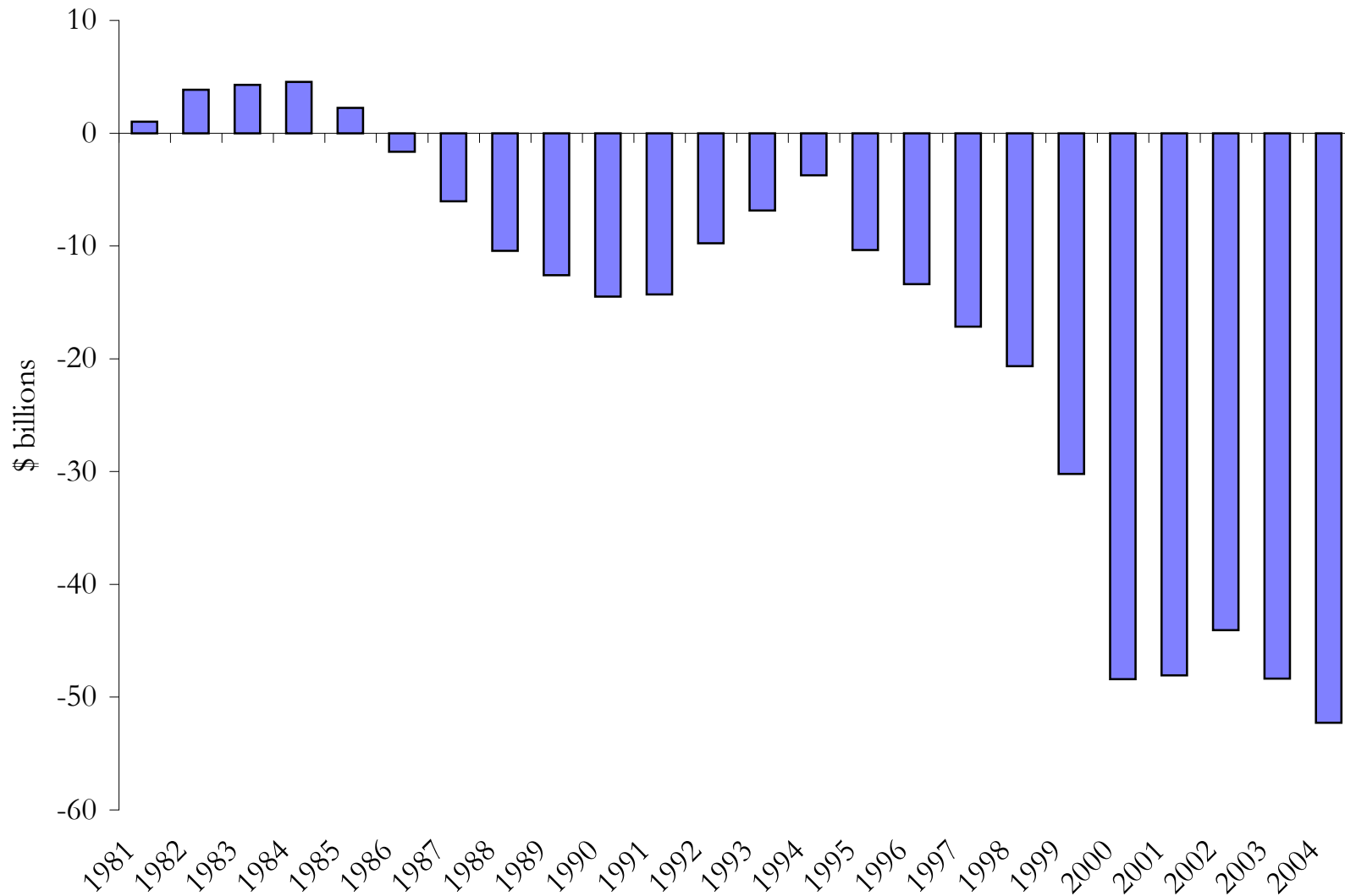
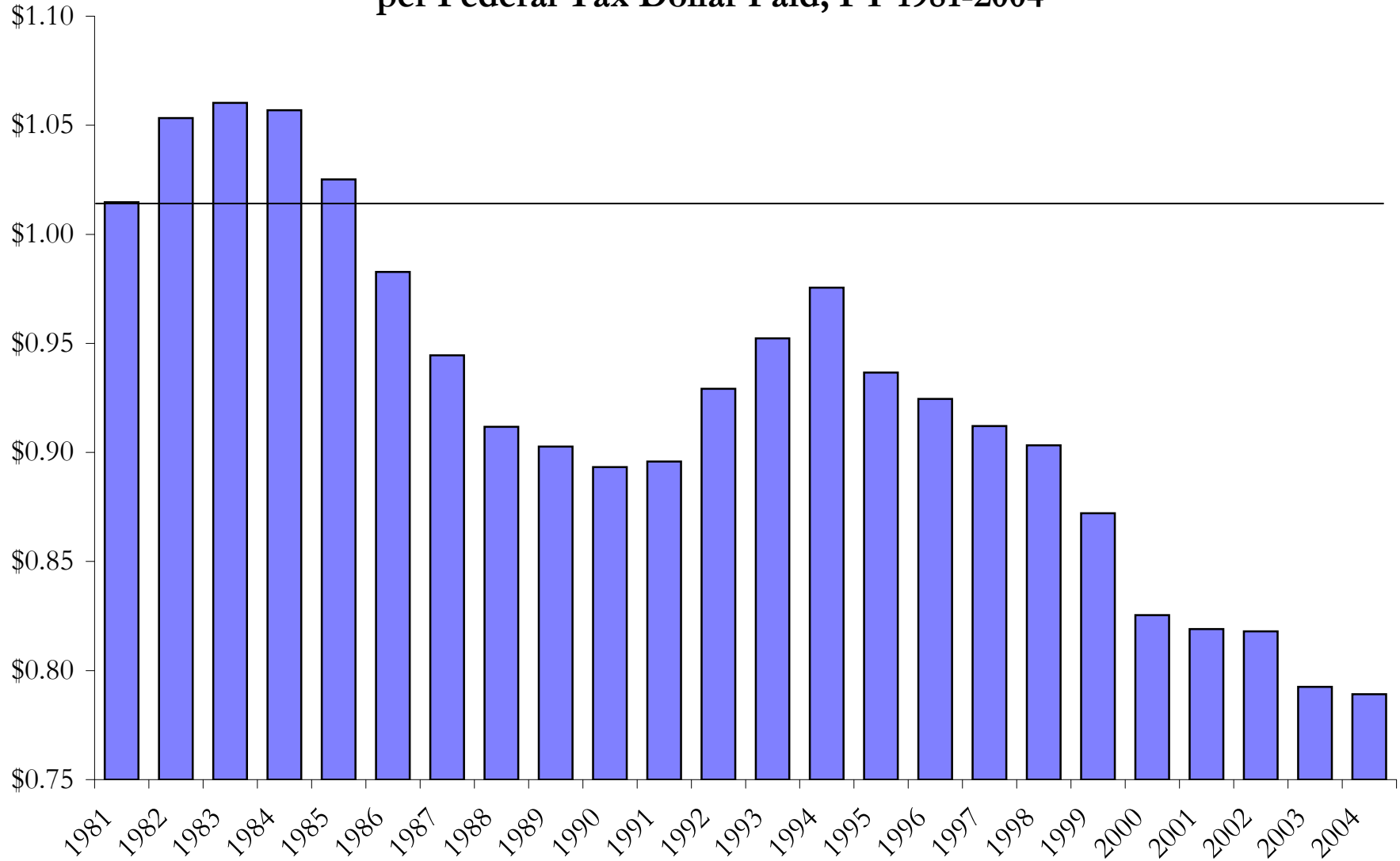


## California Balance of Payments with the Federal Treasury, 1981-2004



## California Return on Investment: Federal Expenditures in California per Federal Tax Dollar Paid, FY 1981-2004



## Return Per Tax Dollar

	Return per Dollar
New Jersey	0.56
Minnesota	0.68
New Hampshire	0.68
Connecticut	0.68
Illinois	0.72
Nevada	0.73
Massachusetts	0.78
<b>California</b>	0.79
Delaware	0.79
New York	0.80
Colorado	0.80
Wisconsin	0.81
Michigan	0.85
Washington	0.88
Oregon	0.95
Texas	0.95
Georgia	0.97
Indiana	0.97
Florida	1.00
<b>U.S. Average (states)</b>	1.00
Ohio	1.00
Rhode Island	1.02
Nebraska	1.05
Pennsylvania	1.06
Wyoming	1.09
North Carolina	1.09
Iowa	1.10
Vermont	1.11
Kansas	1.11
Utah	1.14
Idaho	1.27
Missouri	1.28
Arizona	1.30
Tennessee	1.32
South Carolina	1.38
Maine	1.39
Maryland	1.44
Kentucky	1.45
Louisiana	1.45
South Dakota	1.47
Arkansas	1.47
Oklahoma	1.47
Montana	1.55
Hawaii	1.59
Virginia	1.66
Alabama	1.70
North Dakota	1.71
Mississippi	1.77
West Virginia	1.83
Alaska	1.88
New Mexico	2.01

Sources: Consolidated Federal  
Funds Report, U.S. Census

# Federal Expenditures Per Capita, United States, California, and California's 15 Largest Counties, Fiscal Year 2004

